

## APPENDIX D:

### *Instructions for Constructing a Shelled Corn Barrel Feeder for Upland Game Birds and Mammals*

Both plastic or metal 55-gallon barrels can be used for this type of feeder (Fig. D1). However, when possible, get barrels that have removable lids and **do not use barrels in which flammable materials like gasoline or other dangerous chemicals have been stored.** Around the bottom of the barrel, cut three, 13½" x 8" rectangular openings about 10 inches apart and two inches above the bottom. Drill several half-inch holes in the lowest portion of the bottom to allow for drainage.

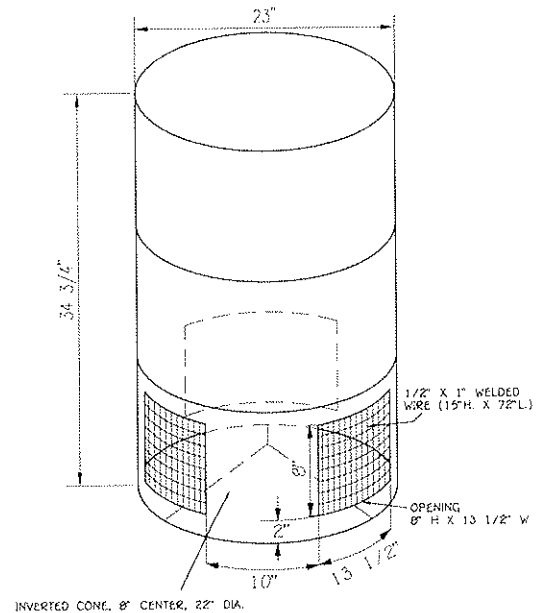
Construct a cone the diameter of the barrel (about 22") and about 8" high (Fig. D2). Place the cone with the high point projecting upward in the bottom of the barrel.

Place a 6' x 12-15" piece of ½" x 1" weld wire or ½" x ½" hardware cloth along the inside wall of the barrel so it covers the three openings around the bottom of the barrel. Drill ¼" holes in strategic locations to receive the ¼" bolts used to secure the wire mesh to the sides of the barrel. Bolt the fender washers on the inside to hold the wire in place.

Construct a platform that will allow for drainage and keep the barrel out of the snow (Fig. B1 or D3).

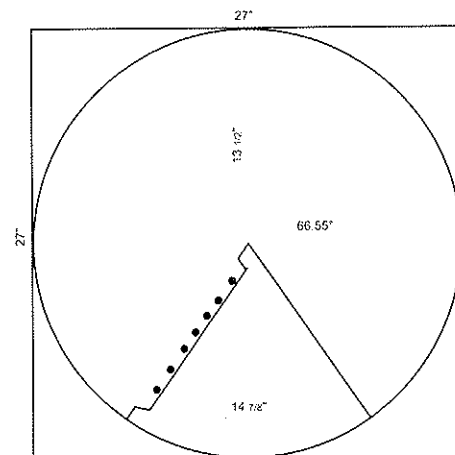
If you were unable to obtain barrels with removable lids, cut out the lid and fasten it to a piece of 24" x 24½"+ all weather plywood. The cut out portion attached will help keep the lid from sliding off.

### SHELLED-CORN BARREL FEEDER FOR UPLAND GAME BIRDS AND MAMMALS



*Figure D1.* This barrel feeder is designed to provide about 5.3 bushels of shelled corn for various upland game birds and mammals. Information for constructing the inverted cone, platform, and deer-proof fence and the materials list are provided in Appendix D: Figs. D2, D3 and D5, and Table D1.

### BARREL FEEDER CONE



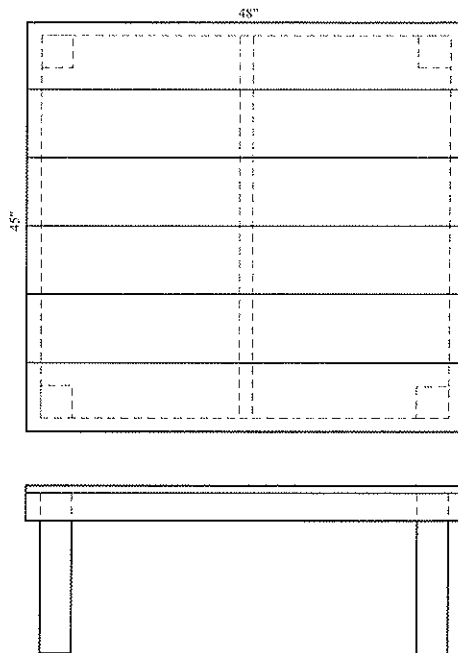
*Figure D2.* This cone is constructed of 26-gauge galvanized steel. Overlap the tab and pop rivet together. When complete, the cone will be about 8" high and 22" in diameter. Place the cone point up in the bottom of the barrel feeder (Appendix D: Fig. D1) to force the shelled corn outward against the ½" x 1" weld wire or ½" x ½" hardware cloth.

*Table D1. The materials list is for constructing a deer-proof, shelled corn, wildlife barrel feeder for upland game birds and mammals.*

ITEM	NUMBER REQUIRED
<u>Barrel Feeder</u>	
27" x 27," 26-ga. galv. Sheet metal	1
1/2" x 1" x 15"H x 6' L weld wire	1
55 gallon plastic or steel barrel	1
1/4" X 1/2" stove bolts w/nuts	12
1/4" fender washers	12
1/8" x 1/4" pop rivets	6
<u>Platform</u>	
1" x 8" x 8' green treated	3
2" x 4" x 8' green treated	1
2" x 4" x 12' green treated	1
4" x 4" x 6' green treated	1
3 1/2" galv. deck screws	32
2 1/2" galv. deck screws	40
<u>Deer Exclosure</u>	
7' T-posts	4
52"H x 16'L galv. cattle panels (4 ga.)	2
20' of 14 ga. fence wire <sup>1</sup>	1

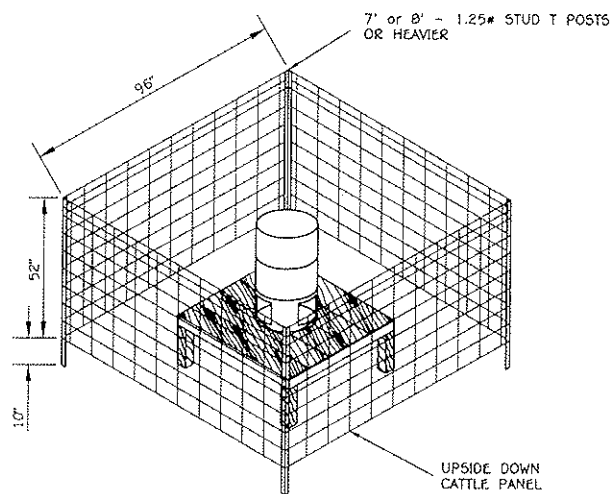
<sup>1</sup>This wire is used to fasten the cattle panels to the fence posts.

### BARREL FEEDER PLATFORM



*Figure D3. This platform is for the crib or barrel feeders shown in Figs. B1, C1 and D1. The materials required are listed in Table D1.*

### DEER EXCLOSURE



*Figure D4. A fence designed to deny deer access to feeders designed to provide ear or shelled corn for upland game birds and mammals (See Appendix B: Fig. B1, Appendix D: Fig. D1). A materials list is provided in Appendix D: Table D1.*